

SIGHT FLOW INDICATORS

Sight flow indicators provide an efficient way of checking the flow of fluids through pipelines. The main chamber is constructed of casting developed from either carbon steel, SS 316 or SS 316L grade material. Toughened glass, special gaskets and rust proof nuts and bolts ensure efficient and long service.

PIE Sight Flow Indicators are available in 3 models :

ROTARY TYPE – SERIES 10*

Best suited for lines carrying dark solutions where direction of rotor indicates flow direction. Recommended for any flow direction.

FLAPPER TYPE – SERIES 20*

Best suited for lines carrying transparent or slightly opaque solutions where position of the hinged flap indicates variation in flow rate. Recommended for horizontal and vertically upwards flow direction.

DRIP TYPE – SERIES 30*

Best suited for lines having intermittent flow where flow can be seen through the dripping. Recommended for downward vertical flow.

*Use suffix S for Screw end connection i.e. 10S, 20S or 30S

*Use suffix F for Flange end connection i.e. 10F, 20F or 30F

Screw end connection indicators are available for pipe size 1/2" through 2" with pressure rating of 150 PSIG.

TYPE- 10S- 20S- 30S- 150 PSIG

PIPE SIZE		1/2"	3/4"	1"	1 1/4"	1 1/2"	2"
DIMENSIONS (mm)	L	95	95	108	140	140	158
	D	31	31	32	55	55	63

Flange end connection indicators are available for pipe size 1/2" through 8" with pressure rating of 150 and 300 PSIG as per the requirement.

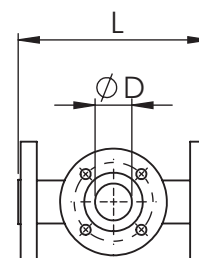
TYPE- 10F- 20F- 30F- 300 PSIG

PIPE SIZE	DIMENSIONS (mm)	
	L	D
1/2" & 3/4"	150	25
1"	175	32
1 1/2"	190	48
2"	219	50
2 1/2" & 3"	289	81
4"	336	108
6"	543	140
8"	585	140

TYPE- 10F- 20F- 30F- 150 PSIG

PIPE SIZE	DIMENSIONS (mm)	
	L	D
1/2" & 3/4"	117	29
1"	143	32
1 1/2"	165	48
2"	200	50
2 1/2" & 3"	239	81
4"	280	111
6"	365	175
8"	415	214

***PTFE/ PFA lined sight glasses shall be manufactured upon Client's request.**



PROCESS INSTRUMENTATION AND ENGINEERS,

P- 51/2, Pearl Road, Kinfra IIT Park, Menonpara Road, Kanjikode, Palakkad District, Kerala - 678621.

Mob: +91- 9061990002/9048882022/8281269991. E-mail: pienggkerala@gmail.com